

BALDOR® • RELIANCE 

Paquete de información de producto

CP2333TX

15HP,1760RPM,3PH,60HZ,254T,0756M,TEFC,F1

Detalle producto							
Revisión:	N	Estado:	PRD/A	Núm. cambio:		Propietario:	No
Tipo:	AC	Spec elec.:	07WGX739	Diagrama Conexión:	CD0005	Planta fabr.:	
Spec Mec.:	07H305	Diseño:	07LYH305	Polos:	04	Fecha de creación:	02-07-2011
Base:	RG	Efec. Fecha:	07-11-2019	Cables:	9#12		

Specs			
Catalog Number:	CP2333TX	Heater Indicator:	No Heater
Enclosure:	TEFC	Insulation Class:	F
Frame:	254T	Inverter Code:	Not Inverter
Frame Material:	Iron	KVA Code:	J
Output @ Frequency:	15.000 HP @ 60 HZ	Lifting Lugs:	Standard Lifting Lugs
Synchronous Speed @ Frequency:	1800 RPM @ 60 HZ	Locked Bearing Indicator:	No Locked Bearing
Voltage @ Frequency:	208.0 V @ 60 HZ	Motor Lead Quantity/Wire Size:	9 @ 12 AWG
	230.0 V @ 60 HZ	Motor Lead Exit:	Ko Box
	460.0 V @ 60 HZ	Motor Lead Termination:	Flying Leads
XP Class and Group:	None	Motor Type:	0756M
XP Division:	Not Applicable	Mounting Arrangement:	F1
Agency Approvals:	UR	Power Factor:	83
	CSA	Product Family:	Chemical Processing (Not DC)
Auxillary Box:	No Auxillary Box	Pulley End Bearing Type:	Ball
Auxillary Box Lead Termination:	None	Pulley Face Code:	Standard
Base Indicator:	Rigid	Pulley Shaft Indicator:	Standard
Bearing Grease Type:	Polyrex EM (-20F +300F)	Rodent Screen:	None
Blower:	None	Shaft Extension Location:	Pulley End

Current @ Voltage:	18.500 A @ 460.0 V	Shaft Ground Indicator:	No Shaft Grounding
	37.000 A @ 230.0 V	Shaft Rotation:	Reversible
	40.000 A @ 208.0 V	Shaft Slinger Indicator:	Shaft Slinger
Design Code:	A	Speed Code:	Single Speed
Drip Cover:	No Drip Cover	Motor Standards:	NEMA
Duty Rating:	CONT	Starting Method:	Direct on line
Electrically Isolated Bearing:	Not Electrically Isolated	Thermal Device - Bearing:	None
Feedback Device:	NO FEEDBACK	Thermal Device - Winding:	None
Front Face Code:	Standard	Vibration Sensor Indicator:	No Vibration Sensor
Front Shaft Indicator:	None	Winding Thermal 1:	None
		Winding Thermal 2:	None

Placa NP1258E

CAT.NO.	CP2333TX		
SPEC.	07H305X739H5		
HP	15		
VOLTS	208-230/460		
AMP	40-37/18.5		
RPM	1760		
FRAME	254T	HZ	60
SER.F.	1.15	CODE	J
NEMA-NOM-EFF	91	PF	83
RATING	40C AMB-CONT		
CC		DES	A
DE	6309	ODE	6307
ENCL	TEFC	SN	
	NOT FOR USE IN USA		
		PH	3
		CL	F
		USABLE AT 208V	

Placa NP0090E

FRONT 6307

PULLEY 6309

LUBRICATE WITH

GREASE POLYREX EM

Lista de partes		
Núm. parte	Descripción	Cantidad
SA216827	SA 07H305X739H5	1.000 EA
RA204007	RA 07H305X739H5	1.000 EA
37FN3002B01	EXFN, PLASTIC, 7.50 OD, 1.155 ID	1.000 EA
HW3201A01	1/2-13 EYEBOLT	1.000 EA
09CB1002A28G	CONDUIT BOX, 1.25 N.P.T. (GRAY)	1.000 EA
RM1017	LEAD SEPERATOR GASKET MODEL 307 1/8" THK	1.000 EA
51XW2520A12	.25-20 X .75, TAPTITE II, HEX WSHR SLTD	2.000 EA
10XN2520S06	1/4 20X3/8 HX HD CAP S.S.	1.000 EA
WD1000B16	T&B CX70TN OR L70P TERMINAL LUG	1.000 EA
37EP1101A43G	PU EP 07 BRG W/GRS, RELIEF, DRAIN & SLIN	1.000 EA
HW4500A01	1641B(ALEMITE)400 UNIV, GREASE FITT	1.000 EA
HA4051A00	PLASTIC CAP FOR GREASE FITTING	1.000 EA
HW4500A17	317400 ALEMITE GREASE RELIEF	1.000 EA
HA4054	SHORT T-DRAIN FITTING, .125" N.P.T.	1.000 EA
HW5100A08	W3118-035 WVY WSHR (WB)	1.000 EA
07EP1116A02G	ENDPLATE, MACH, W/GREASERS & RELIEF (GRA	1.000 EA
HW4500A01	1641B(ALEMITE)400 UNIV, GREASE FITT	1.000 EA
HA4051A00	PLASTIC CAP FOR GREASE FITTING	1.000 EA
HW4500A17	317400 ALEMITE GREASE RELIEF	1.000 EA
HA4054	SHORT T-DRAIN FITTING, .125" N.P.T.	1.000 EA
XY3118A12	5/16-18 HEX NUT DIRECTIONAL SERRATION	4.000 EA
07FH1001A01G	SPL FAN HOUSING, 307, W/GREASER, GRAY EP	1.000 EA
10XN2520A28	1/4-20X 1 3/4 HEX HD	3.000 EA
WD4100A02	DP-1000 HEYCO PLUG OR 62MP1000 MICRO PL	1.000 EA

Lista de partes (cont.)		
Núm. parte	Descripción	Cantidad
12CB1503G	CONDUIT BOX CAST. (GRAY)	1.000 EA
12GS1002	GASKET, CONDUIT BOX LID, NEOP	1.000 EA
10XN2520A24	1/4-20X 1 1/2 HEX HD X	2.000 EA
HW1001A25	LOCKWASHER 1/4, ZINC PLT .493 OD, .255 I	2.000 EA
HA1005A07	SLINGER, OD 2.25, ID 1.344, 307 BRG	1.000 EA
HW4600B67	V-RING SLINGER 1.770 X 2.170 X .28 VITON	1.000 EA
HW2501G25	KEY, 3/8 SQ X 2.875	1.000 EA
HA7000A03	KEY RETAINER RING 1.62 & 1.88 DIA. SH	1.000 EA
MJ5001A27	32220KN GRAY SEALER *MIN BUY 4 QTS=1GAL	0.001 QT
LB1115N	LABEL,LIFTING DEVICE (ON ROLLS)	1.000 EA
85XU0407S04	4X1/4 U DRIVE PIN STAINLESS	4.000 EA
MJ1000A02	GREASE, POLYREX EM EXXON	0.050 LB
51XB1214A20	12-14X1.25 HXWSSLD SERTYB	1.000 EA
MG1025N19	WILKOFASST, 778.50, RELIANCE BLUE-GREEN	0.036 GA
HA3104A25	THRUBOLT .31-18 X 14.75	4.000 EA
LC0005E01	CONN.DIA./WARNING LABEL (LC0005/LB1119N)	1.000 EA
NP1258E	SS CP UL CSA CC	1.000 EA
NP0090E	SS NO LOGO'S BEARING & GREASE DATA	1.000 EA
07PA1011	PKG GRP, 07 CAST IRON PK1181	1.000 EA
10XL3808A28	3/8 X 1 3/4" LAG SCREW	2.000 EA
MN416A01	TAG-INSTAL-MAINT no wire (1200/bx) 1/21	1.000 EA

AC Induction Motor Performance Data

Record # 20291

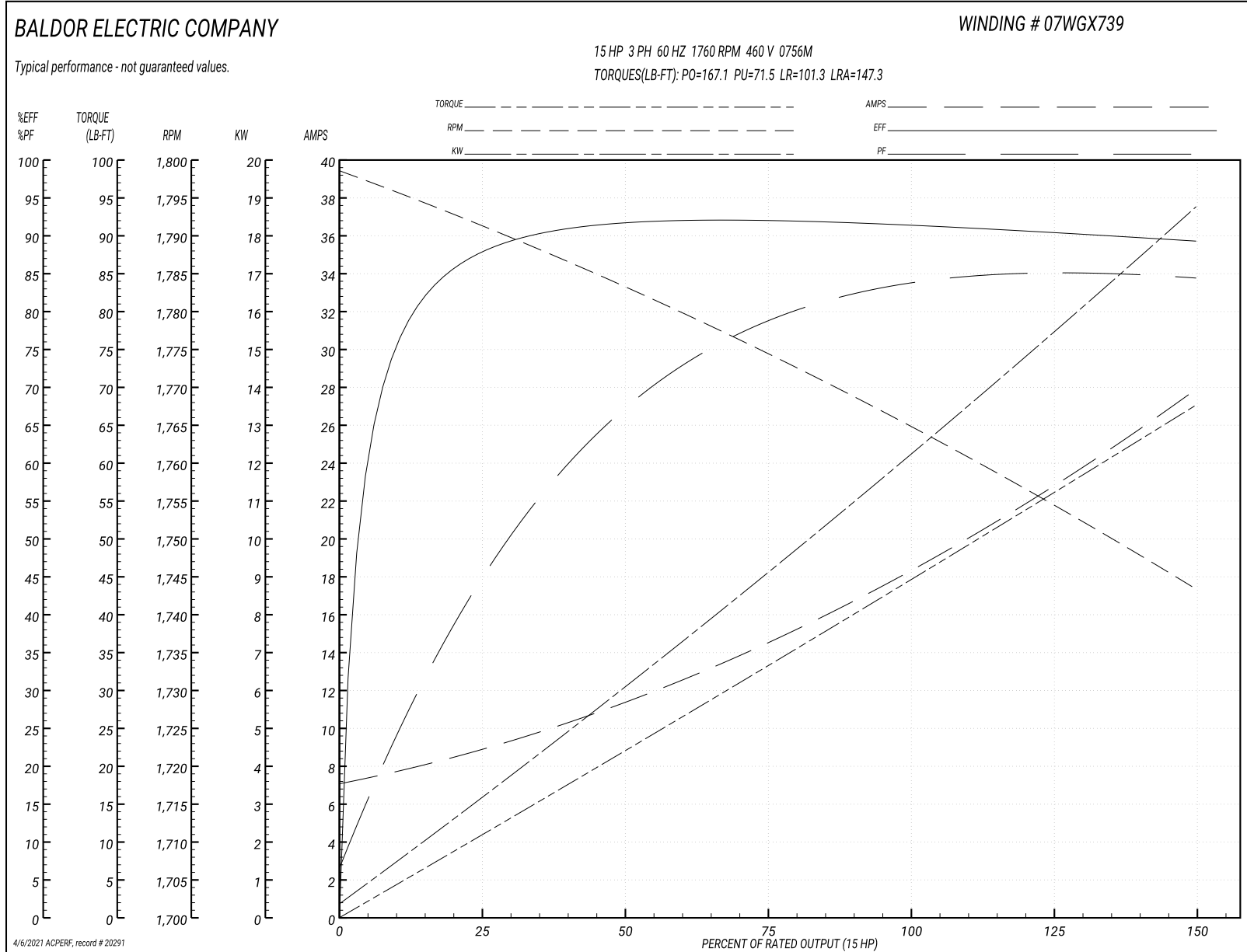
Typical performance - not guaranteed values

Winding: 07WGX739-R001			Type: 0756M			Enclosure: TEFC		
Nameplate Data				460 V, 60 Hz: High Voltage Connection				
Rated Output (HP)	15		Full Load Torque	44.6 LB-FT				
Volts	208-230/460		Start Configuration	direct on line				
Full Load Amps	40-37/18.5		Breakdown Torque	167.1 LB-FT				
R.P.M.	1760		Pull-up Torque	71.5 LB-FT				
Hz	60 Phase	3	Locked-rotor Torque	101.3 LB-FT				
NEMA Design Code	A	KVA Code	J	Starting Current	147.3 A			
Service Factor (S.F.)	1.15		No-load Current	7.39 A				
NEMA Nom. Eff.	91	Power Factor	83	Line-line Res. @ 25°C	0.618 Ω			
Rating - Duty	40C AMB-CONT		Temp. Rise @ Rated Load	65°C				
S.F. Amps			Temp. Rise @ S.F. Load	83°C				
			Locked-rotor Power Factor	35				
			Rotor inertia	1.38 LB-FT ²				

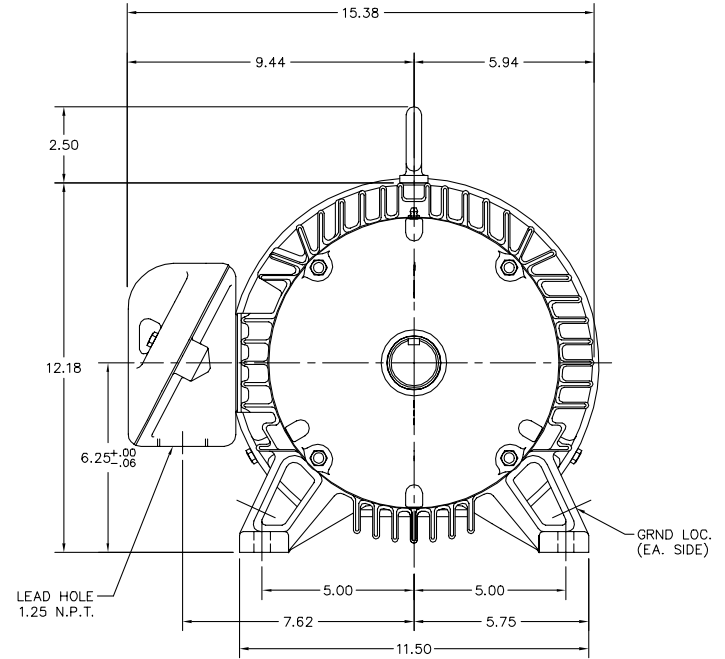
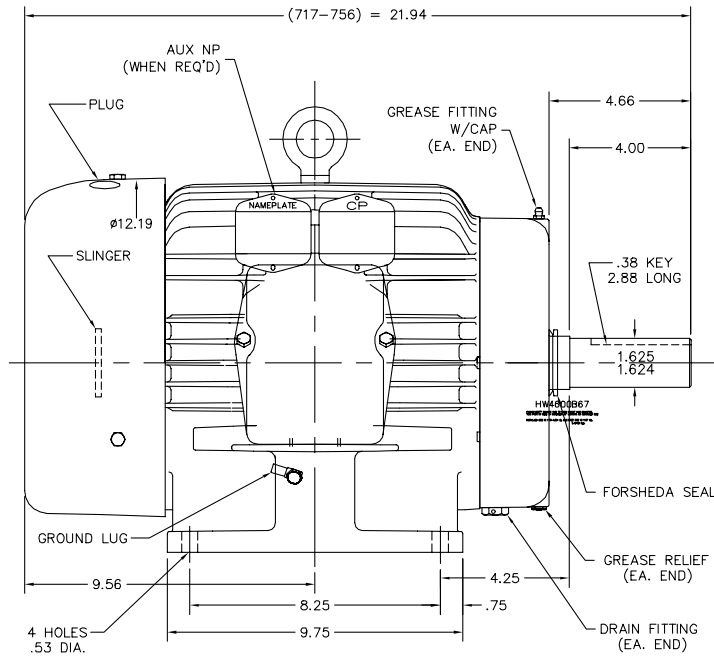
Load Characteristics 460 V, 60 Hz, 15 HP

% of Rated Load	25	50	75	100	125	150	S.F.
Power Factor	47	68	78	83	84	85	84
Efficiency	87.6	91.6	92.1	91.6	90.6	89.3	91
Speed	1791	1783	1775	1765	1755	1743	1759
Line amperes	8.47	11.1	14.5	18.6	22.9	27.7	21.2

Gráfica de desempeño 460V, 60Hz, 15.0HP Desempeño típico - Sin valores garantizados



07LYH305



07LYH305

CUSTOMER IS RESPONSIBLE FOR DETERMINING THAT BALDOR'S PRODUCT WILL PERFORM SUITABLY IN THE INTENDED APPLICATION.

REV. DESC: CHANGE GDR LUG CALLOUT	VERSION: 03	TDR: 000001030452
REV. LTR: F	REVISD: 12:39:34 06/01/2017	BY: USZAHAR
FILE: \AAA\00009\261		
MTL: -		

BALDOR

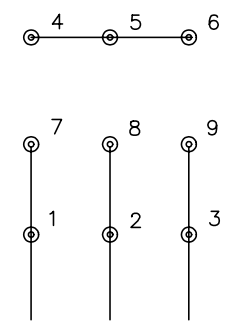
HORZ 254T 307M TEFC CP

SH 1 of 1

CD0005

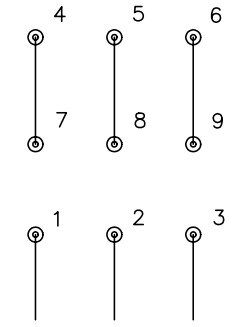


LOW VOLTAGE
(2Y)



LINE

HIGH VOLTAGE
(1Y)



LINE

NOTES:

1. INTERCHANGE ANY TWO LINE LEADS TO REVERSE ROTATION.
2. OPTIONAL THERMOSTATS ARE PROVIDED WHEN SPECIFIED.
3. ACTUAL NUMBER OF INTERNAL PARALLEL CIRCUITS MAY BE A MULTIPLE OF THOSE SHOWN ABOVE.
4. LEAD COLORS ARE OPTIONAL. LEADS MUST ALWAYS BE NUMBERED AS SHOWN.

REV. DESC: REVISE TO SHOW OPTIONAL COLORS			
REV. LTR: E	BY: JLP	REVISED: 01/19/99 10:15	TDR: 0171435
900000		FILE: AAA00005140	MDL: -
		MTL: -	

BALDOR ELECTRIC Co.

3PH, DV, 9 LEADS

CD0005