

BALDOR® • RELIANCE 

Paquete de información de producto

L3507

.75HP, 1725RPM, 1PH, 60HZ, 56, 3428LC, TEFC, F1

Detalle producto							
Revisión:	B	Estado:	PRD/A	Núm. cambio:		Propietario:	No
Tipo:	AC	Spec elec.:	34WGR714	Diagrama Conexión:	CD0055	Planta fabr.:	
Spec Mec.:	34G426	Diseño:	34LYG426	Polos:	04	Fecha de creación:	11-19-2020
Base:	RG	Efec. Fecha:	03-02-2021	Cables:	6#18		

Specs			
Catalog Number:	L3507	Insulation Class:	F
Product Complexity Level:	Standard	Inverter Code:	Not Inverter
Enclosure:	TEFC	KVA Code:	J
Frame:	56	Lifting Lugs:	No Lifting Lugs
Frame Material:	Steel	Locked Bearing Indicator:	No Locked Bearing
Output @ Frequency:	.750 HP @ 60 HZ	Motor Lead Quantity/Wire Size:	6 @ 18 AWG
Synchronous Speed @ Frequency:	1800 RPM @ 60 HZ	Motor Lead Exit:	Ko Box
Voltage @ Frequency:	115.0 V @ 60 HZ	Motor Lead Termination:	Flying Leads
	230.0 V @ 60 HZ	Motor Type:	3428LC
XP Class and Group:	None	Mounting Arrangement:	F1
XP Division:	Not Applicable	Power Factor:	78
Agency Approvals:	UR	Product Family:	General Purpose
	CSA	Pulley End Bearing Type:	Ball
Auxillary Box:	No Auxillary Box	Pulley Face Code:	Standard
Auxillary Box Lead Termination:	None	Pulley Shaft Indicator:	Standard
Base Indicator:	Rigid	Rodent Screen:	None
Bearing Grease Type:	Polyrex EM (-20F +300F)	RoHS Status:	ROHS COMPLIANT
Blower:	None	Shaft Extension Location:	Pulley End

Current @ Voltage:	8.400 A @ 115.0 V	Shaft Ground Indicator:	No Shaft Grounding
	4.400 A @ 208.0 V	Shaft Rotation:	Reversible
	4.200 A @ 230.0 V	Shaft Slinger Indicator:	No Slinger
Design Code:	N	Speed Code:	Single Speed
Drip Cover:	No Drip Cover	Motor Standards:	NEMA
Duty Rating:	CONT	Starting Method:	Direct on line
Electrically Isolated Bearing:	Not Electrically Isolated	Thermal Device - Bearing:	None
Feedback Device:	NO FEEDBACK	Thermal Device - Winding:	None
Front Face Code:	Standard	Vibration Sensor Indicator:	No Vibration Sensor
Front Shaft Indicator:	None	Winding Thermal 1:	None
Heater Indicator:	No Heater	Winding Thermal 2:	None

Placa NP1256L										
CAT.NO.	L3507									
SPEC.	34G426R714									
HP	.75									
VOLTS	115/230									
AMP	8.4/4.2									
RPM	1725									
FRAME	56				HZ	60			PH	1
SER.F.	1.25		CODE	J	DES	N		CLASS	F	
NEMA-NOM-EFF	72		PF	78						
RATING	40C AMB-CONT									
CC								USABLE AT 208V	4.4	
DE	6203				ODE	6203				
ENCL	TEFC		SN							
	SFA 10/5									

Lista de partes		
Núm. parte	Descripción	Cantidad
SA388043	SA 34G426R714	1.000 EA
RA378385	RA 34G426R714	1.000 EA
OC3020F12SP	CYL OIL CAP 20MFD/370V	1.000 EA
EC1270A02SP	CAPACITOR ELECTRICO	1.000 EA
NS2512A01	INSULATOR, CONDUIT BOX X X	1.000 EA
34CB3002A	CB CAST W/.88 DIA HOLE	1.000 EA
34GS1029A01	JUNTA P/ CAJA DE CONEXIONES	1.000 EA
51XW0832A07	10-16 X 7/16 HXWSSLD SERTYB	2.000 EA
11XW1032G06	10-32 X .38, TAPTITE II, HEX WSHR SLTD U	1.000 EA
51XW0832A07	8-32 X .44, TAPTITE II, HEX WSHR SLTD SE	2.000 EA
34EP3102A01SP	FR ENDPLATE, MACH	1.000 EA
34CB3801	CAPACITOR BOX, DIE CAST	1.000 EA
34GS3002	GASKET, CAPACITOR BOX	1.000 EA
34GS5003A01	FOAM SLEEVE, ID = 2 1/16" X 4 3/8"	1.000 EA
51XB1214A08	12-14 X 1/2HX WS SL SR TYBX	2.000 EA
HW5100A03	WAVY WASHER (W1543-017)	1.000 EA
34EP3102A02SP	FR/PU ENDPLATE, MACH	1.000 EA
XY1032A02	10-32 HEX NUT DIRECTIONAL SERRATION	4.000 EA
34FN3002A01SP	EXTERNAL FAN, PLASTIC, .637/.639 HUB W/	1.000 EA
34FH4002A01SP	IEC FH NO GREASER PRIMED	1.000 EA
51XW1032A06	10-32 X .38, TAPTITE II, HEX WSHR SLTD S	3.000 EA
34CB4517	CB LID 4 MTG HOLES .22 DIA STAMPED, FOR	1.000 EA
34GS1031A01	EMPAQUE	1.000 EA
51XW0832A07	8-32 X .44, TAPTITE II, HEX WSHR SLTD SE	4.000 EA

Lista de partes (cont.)		
Núm. parte	Descripción	Cantidad
HW2501D13	KEY, 3/16 SQ X 1.375	1.000 EA
HA7000A04	KEY RETAINER 0.625 DIA SHAFTS	1.000 EA
34GS5003A01	FOAM SLEEVE, ID = 2 1/16" X 4 3/8"	2.000 EA
MG1000G27	MED CHARCOAL METALLIC GREY	0.014 GA
85XU0407S04	4X1/4 U DRIVE PIN STAINLESS	2.000 EA
SP5051B17	MDL 34 TORQ STAT SW,TYPE LC, STD F1 & F2	1.000 EA
HA3100A37	TORNILLOS 10-32 x 8.500	4.000 EA
LC0001A01	CONN LABEL / WARNING LABEL (LC0001 / LB1	1.000 EA
NP1256L	ALUM UL CSA CC INDUSTRIAL MOTOR A60	1.000 EA
35PA1000	PKG GRP, PRINT PK1008A06	1.000 EA
MN416A01	TAG-INSTAL-MAINT no wire (1200/bx) 1/21	1.000 EA

Accesorios		
Núm. parte	Descripción	Multiplicador
34-171	C FACE KIT	A8

AC Induction Motor Performance Data

Record # 85524

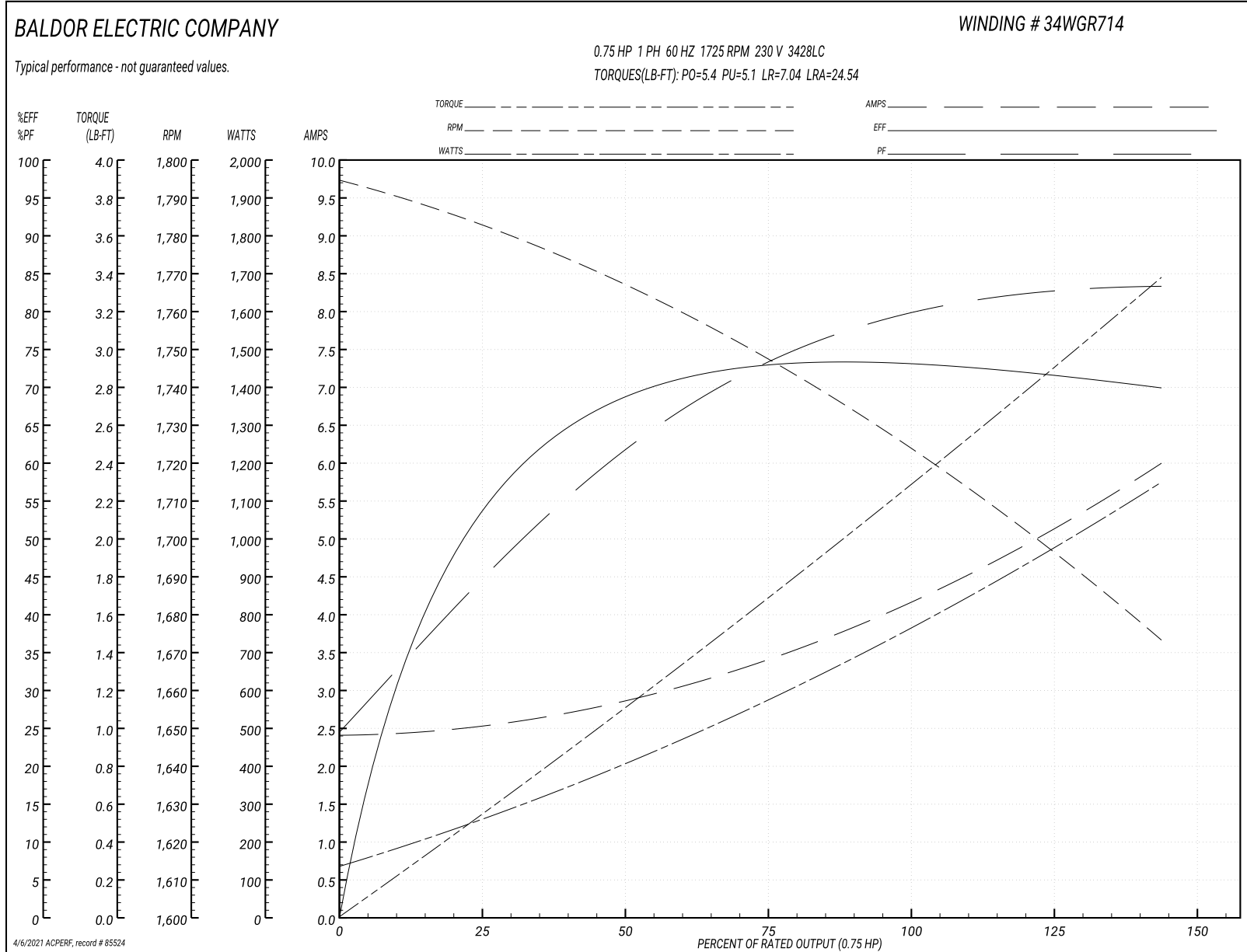
Typical performance - not guaranteed values

Winding: 34WGR714-R001			Type: 3428LC			Enclosure: TEFC			
Nameplate Data				230 V, 60 Hz: High Voltage Connection					
Rated Output (HP)			.75	Full Load Torque				2.25 LB-FT	
Volts			115/230	Start Configuration				direct on line	
Full Load Amps			8.4/4.2	Breakdown Torque				5.4 LB-FT	
R.P.M.			1725	Pull-up Torque				5.1 LB-FT	
Hz	60	Phase	1	Locked-rotor Torque				7.04 LB-FT	
NEMA Design Code	N		KVA Code	J	Starting Current				24.54 A
Service Factor (S.F.)			1.25	No-load Current				2.39 A	
NEMA Nom. Eff.	72	Power Factor	78	Line-line Res. @ 25°C				0.726 Ω A Ph 3.03 Ω B Ph	
Rating - Duty			40C AMB-CONT	Temp. Rise @ Rated Load				66°C	
S.F. Amps			10/5	Temp. Rise @ S.F. Load				84°C	
				Locked-rotor Power Factor				83	
				Rotor inertia				0.0665 lb-ft ²	

Load Characteristics 230 V, 60 Hz, 0.75 HP

% of Rated Load	25	50	75	100	125	150	S.F.
Power Factor	46	62	73	80	83	83	83
Efficiency	52.6	68.4	72.5	73.5	73	69.2	73
Speed	1780	1765	1747	1727	1704	1670	1704
Line amperes	2.54	2.9	3.45	4.09	4.92	6.06	4.92

Gráfica de desempeño 230V, 60Hz, 0.75HP Desempeño típico - Sin valores garantizados



AC Induction Motor Performance Data

Record # 85532

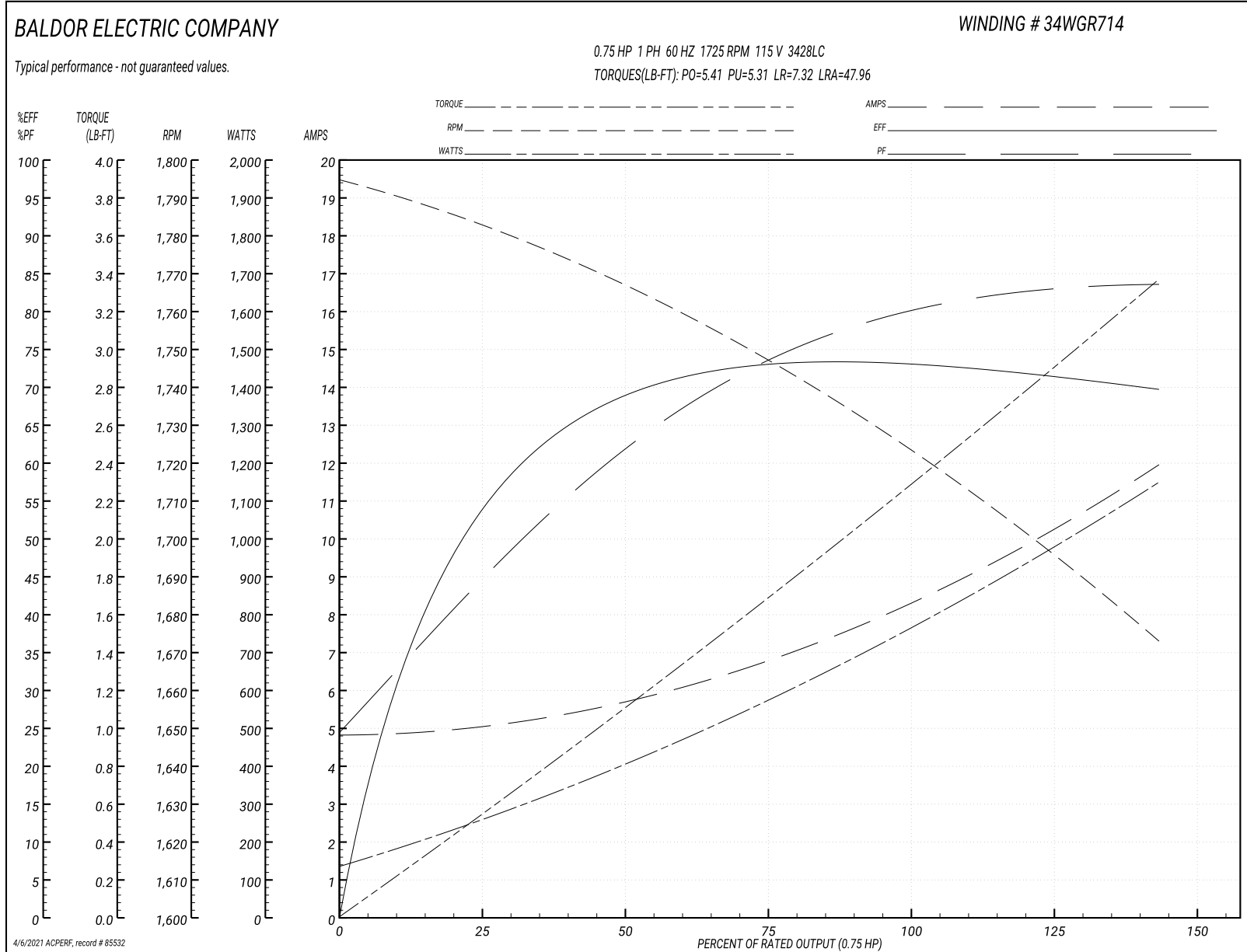
Typical performance - not guaranteed values

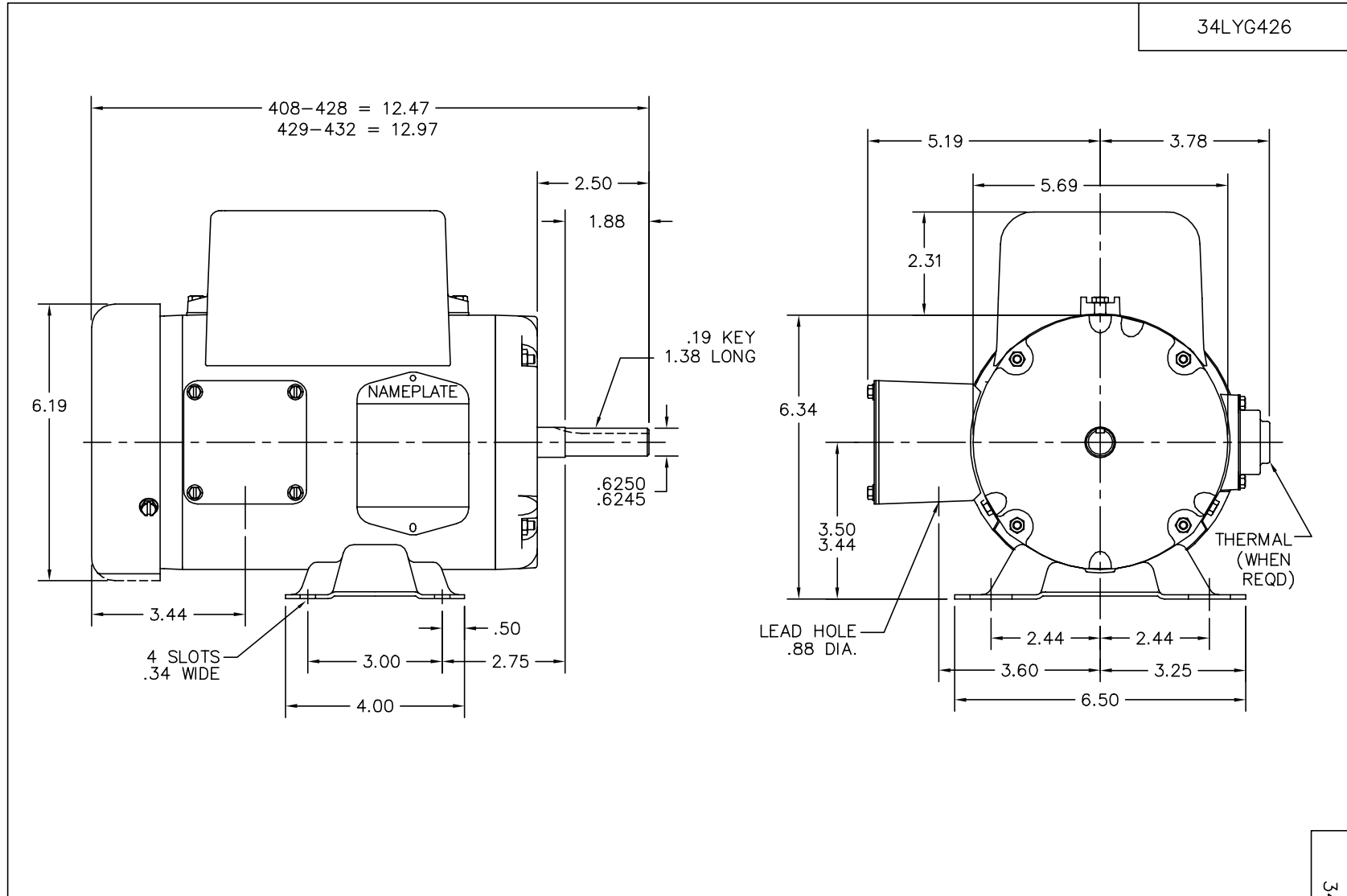
Winding: 34WGR714-R001			Type: 3428LC			Enclosure: TEFC		
Nameplate Data				115 V, 60 Hz: Low Voltage Connection				
Rated Output (HP)	.75		Full Load Torque	2.26 LB-FT				
Volts	115/230		Start Configuration	direct on line				
Full Load Amps	8.4/4.2		Breakdown Torque	5.41 LB-FT				
R.P.M.	1725		Pull-up Torque	5.31 LB-FT				
Hz	60	Phase	1	Locked-rotor Torque	7.32 LB-FT			
NEMA Design Code	N	KVA Code	J	Starting Current	47.96 A			
Service Factor (S.F.)	1.25		No-load Current	4.78 A				
NEMA Nom. Eff.	72	Power Factor	78	Line-line Res. @ 25°C	0.726 Ω A Ph 3.03 Ω B Ph			
Rating - Duty	40C AMB-CONT		Temp. Rise @ Rated Load	66°C				
S.F. Amps	10/5		Temp. Rise @ S.F. Load	82°C				
			Locked-rotor Power Factor	85.8				
			Rotor inertia	0.0665 lb-ft ²				

Load Characteristics 115 V, 60 Hz, 0.75 HP

% of Rated Load	25	50	75	100	125	150	S.F.
Power Factor	46	62	73	80	83	84	83
Efficiency	52.7	68.4	72.5	73.6	72.8	69	72.8
Speed	1780	1765	1747	1726	1703	1670	1703
Line amperes	5.07	5.78	6.88	8.16	9.82	12.09	9.82

Gráfica de desempeño 115V, 60Hz, 0.75HP Desempeño típico - Sin valores garantizados





34LYG426

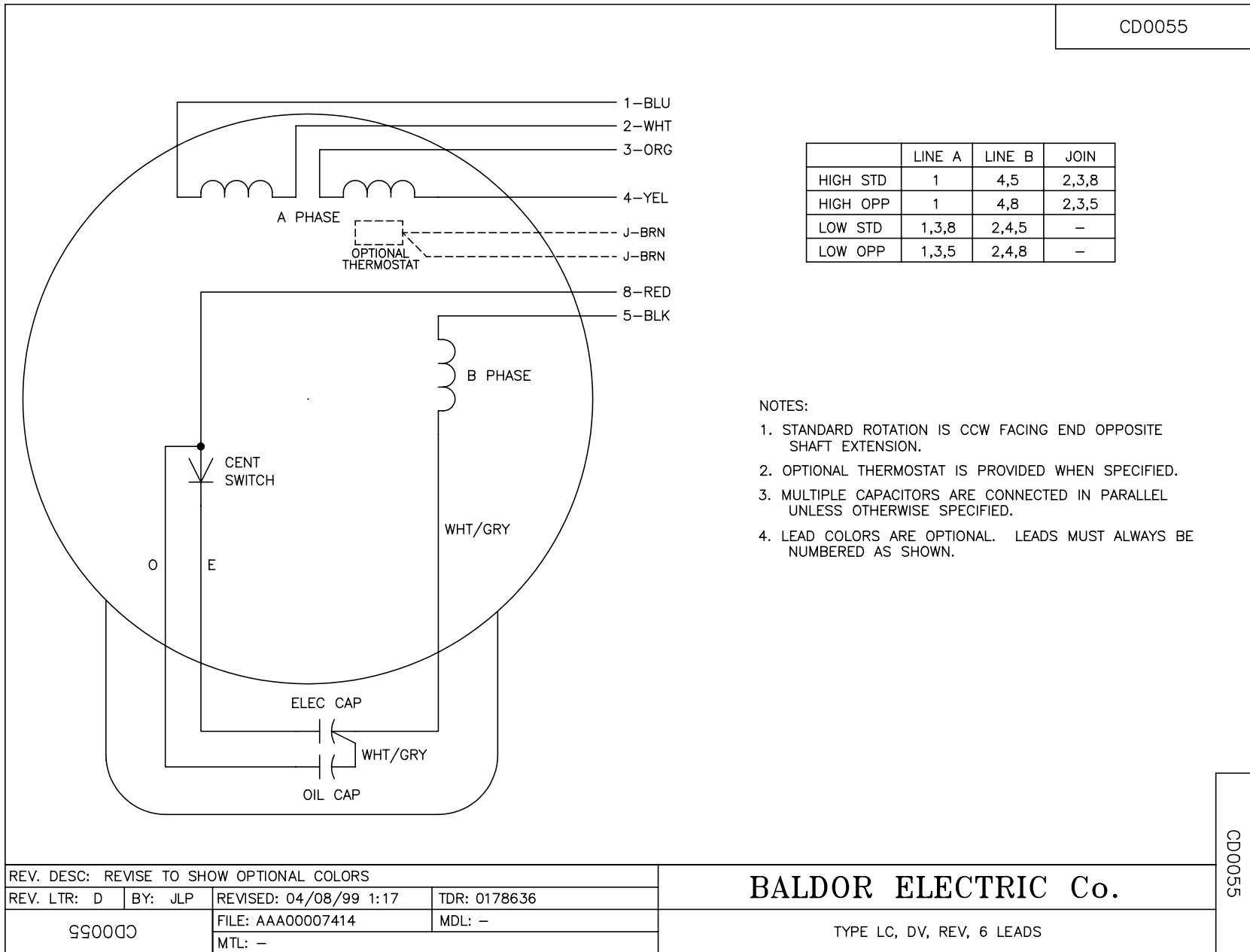
CUSTOMER IS RESPONSIBLE FOR DETERMINING THAT MOTOR PERFORMANCE IS SUITABLE IN THE APPLICATION.

REV. DESC: UPDATED DRAWING		
REV. LTR: B	VERSION: 01	TDR: 000000423571
34LYG426	FILE: \AAA\00038\529	REVISED: 14:29:57 02/26/2007
	MTL: -	BY: ENROSTO

BALDOR ELECTRIC Co.
SPL HORZ 34LC NEMA 56 TEFC

34LYG426

CD0055



REV. DESC: REVISE TO SHOW OPTIONAL COLORS			
REV. LTR: D	BY: JLP	REVISED: 04/08/99 1:17	TDR: 0178636
99000		FILE: AAA00007414	MDL: -
		MTL: -	

BALDOR ELECTRIC Co.

TYPE LC, DV, REV, 6 LEADS

CD0055