

BALDOR® • RELIANCE 

Paquete de información de producto

L3510

MOTOR 1 HP 1725 RPM NEMA 56H

Detalle producto							
Revisión:	AR	Estado:	PRD/A	Núm. cambio:		Propietario:	No
Tipo:	AC	Spec elec.:	35WGX945	Diagrama Conexión:	CD0001	Planta fabr.:	
Spec Mec.:	35J383	Diseño:	35LYJ383	Polos:	04	Fecha de creación:	
Base:	RG	Efec. Fecha:	03-09-2020	Cables:	6#18		

Specs			
Catalog Number:	L3510	Insulation Class:	F
Product Complexity Level:	Standard	Inverter Code:	Not Inverter
Enclosure:	TEFC	KVA Code:	K
Frame:	56H	Lifting Lugs:	No Lifting Lugs
Frame Material:	Steel	Locked Bearing Indicator:	No Locked Bearing
Output @ Frequency:	1.000 HP @ 60 HZ	Motor Lead Quantity/Wire Size:	6 @ 18 AWG
Synchronous Speed @ Frequency:	1800 RPM @ 60 HZ	Motor Lead Exit:	Ko Box
Voltage @ Frequency:	115.0 V @ 60 HZ	Motor Lead Termination:	Flying Leads
	230.0 V @ 60 HZ	Motor Type:	3524L
XP Class and Group:	None	Mounting Arrangement:	F1
XP Division:	Not Applicable	Power Factor:	74
Agency Approvals:	UR	Product Family:	General Purpose
	CSA	Pulley End Bearing Type:	Ball
Auxillary Box:	No Auxillary Box	Pulley Face Code:	Standard
Auxillary Box Lead Termination:	None	Pulley Shaft Indicator:	Standard
Base Indicator:	Rigid	Rodent Screen:	None
Bearing Grease Type:	Polyrex EM (-20F +300F)	RoHS Status:	ROHS COMPLIANT
Blower:	None	Shaft Extension Location:	Pulley End

Paquete de información de producto: L3510 - MOTOR 1 HP 1725 RPM NEMA 56H

Current @ Voltage:	7.000 A @ 208.0 V	Shaft Ground Indicator:	No Shaft Grounding
	6.400 A @ 230.0 V	Shaft Rotation:	Reversible
	12.800 A @ 115.0 V	Shaft Slinger Indicator:	No Slinger
Design Code:	L	Speed Code:	Single Speed
Drip Cover:	No Drip Cover	Motor Standards:	NEMA
Duty Rating:	CONT	Starting Method:	Direct on line
Electrically Isolated Bearing:	Not Electrically Isolated	Thermal Device - Bearing:	None
Feedback Device:	NO FEEDBACK	Thermal Device - Winding:	None
Front Face Code:	Standard	Vibration Sensor Indicator:	No Vibration Sensor
Front Shaft Indicator:	None	Winding Thermal 1:	None
Heater Indicator:	No Heater	Winding Thermal 2:	None

Placa NP1256L										
CAT.NO.	L3510									
SPEC.	35J383X945									
HP	1									
VOLTS	115/230									
AMP	12.8/6.4									
RPM	1725									
FRAME	56H				HZ	60			PH	1
SER.F.	1.15		CODE	K	DES	L		CLASS	F	
NEMA-NOM-EFF	68		PF	74						
RATING	40C AMB-CONT									
CC								USABLE AT 208V	7	
DE	6205				ODE	6203				
ENCL	TEFC			SN						

Lista de partes		
Núm. parte	Descripción	Cantidad
SA025938	SA 35J383X945	1.000 EA
RA021988	RA 35J383X945	1.000 EA
EC1645A06SP	ELEC CAP, 645-774 MFD, 125V, 2.06D X 4.	1.000 EA
NS2512A01	INSULATOR, CONDUIT BOX X X	1.000 EA
35CB3007	CAJA DE CONEXION	1.000 EA
36GS1000SP	GASKET-CONDUIT BOX, .06 THICK #SV-330 LE	1.000 EA
51XW0832A07	10-16 X 7/16 HXWSSLD SERTYB	2.000 EA
11XW1032G06	10-32 X .38, TAPTITE II, HEX WSHR SLTD U	1.000 EA
51XW0832A07	8-32 X .44, TAPTITE II, HEX WSHR SLTD SE	2.000 EA
HW2501D13	KEY, 3/16 SQ X 1.375	1.000 EA
HA7000A04	KEY RETAINER 0.625 DIA SHAFTS	1.000 EA
35EP3122K00	MASTER ODE,203 BRG,.683SH,#26 DRN,FH MTG	1.000 EA
35CB4802A02SP	CAPACITOR COVER, STAMPED X	1.000 EA
35GS3001A02	GASKET, CA.COVER, 5.38 LONG .06 CS301	1.000 EA
51XB1016A05	10-16X5/16HX WA SL SR TYB (F/S)	2.000 EA
HW5100A03	WAVY WASHER (W1543-017)	1.000 EA
35EP3123A00	MASTER DE,205 BRG,.998SH,#26 DRN	1.000 EA
XY1032A02	10-32 HEX NUT DIRECTIONAL SERRATION	4.000 EA
PE-0000001	ZRTG PE ASSEMBLY	1.000 EA
35FN3002A05SP	EXFN, PLASTIC, 6.376 OD, .638 ID	1.000 EA
FE-0000001	ZRTG FE ASSEMBLY	1.000 EA
51XB1214A16	12-14X1.00 HXWSSLD SERTYB	1.000 EA
35FH4005A32SP	IEC FH NO GRSR W/3 HOLES - PRIMED	1.000 EA
51XW1032A06	10-32 X .38, TAPTITE II, HEX WSHR SLTD S	3.000 EA

Lista de partes (cont.)		
Núm. parte	Descripción	Cantidad
35CB4521GX	CONDUIT BOX LID KIT **ORDER INDIV PARTS	1.000 EA
51XW0832A07	8-32 X .44, TAPTITE II, HEX WSHR SLTD SE	4.000 EA
85XU0407S04	4X1/4 U DRIVE PIN STAINLESS	2.000 EA
WD1000A16	2-520128-2 AMP FLAG TERMINAL(4M/RL)	2.000 EA
MJ1000A02	GREASE, POLYREX EM EXXON	0.050 LB
MG1000G27	MED CHARCOAL METALLIC GREY	0.017 GA
HA3100A18	THRUBOLT 10-32 X 9.250	4.000 EA
SP5051A24	MODEL 35 TORQ STATIONARY SWITCH FOR "L"	1.000 EA
LC0001A01	CONN LABEL / WARNING LABEL (LC0001 / LB1	1.000 EA
NP1256L	ALUM UL CSA CC INDUSTRIAL MOTOR A60	1.000 EA
35PA1066	PKG GRP, PRINT PK1008A06	1.000 EA
MN416A01	TAG-INSTAL-MAINT no wire (1200/bx) 1/21	1.000 EA

Accesorios		
Núm. parte	Descripción	Multiplicador
35-8762	C FACE KIT	A8
35EP1506A01SP	D-FLANGE KIT	A8

AC Induction Motor Performance Data

Record # 33217

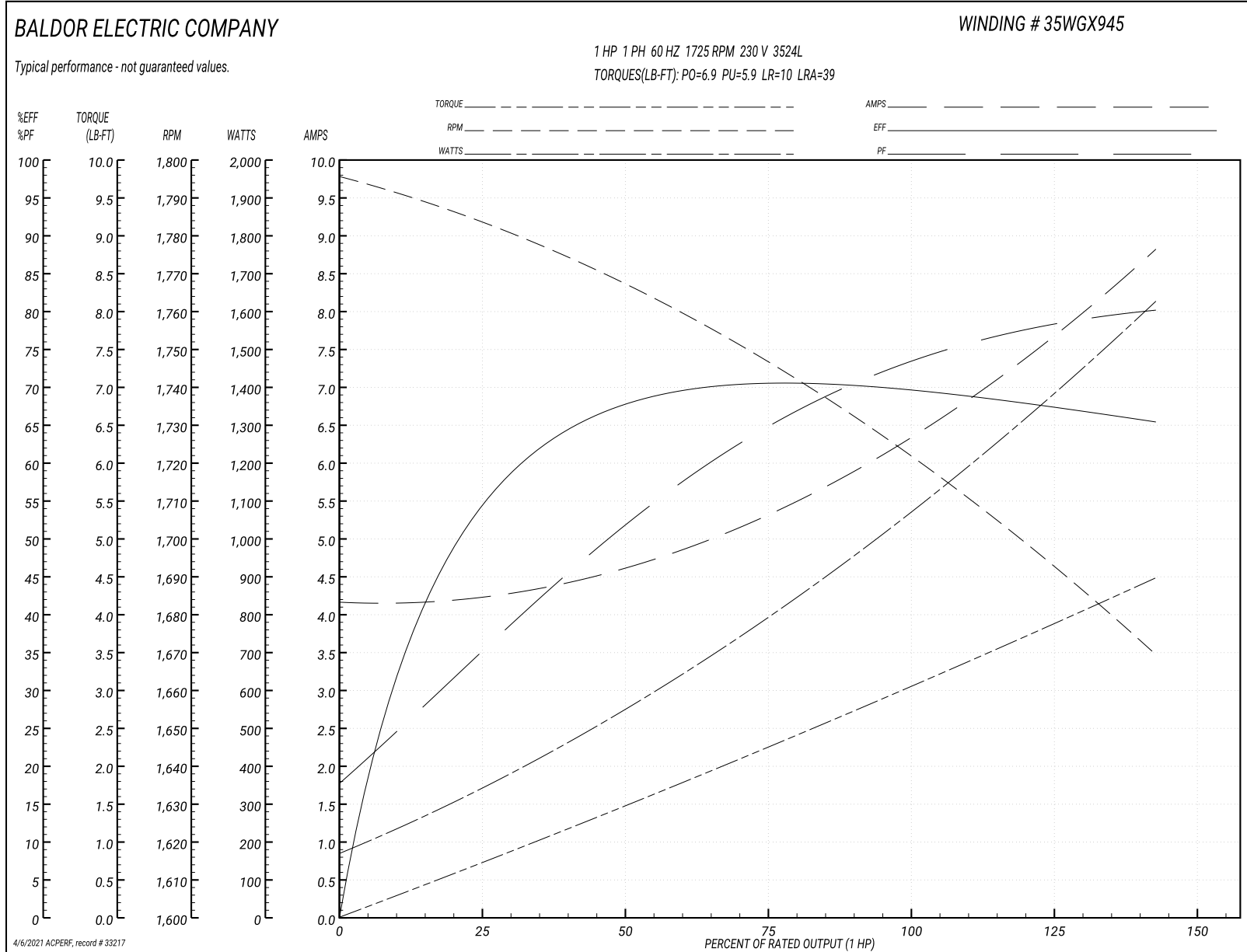
Typical performance - not guaranteed values

Winding: 35WGX945-R003		Type: 3524L		Enclosure: TEFC	
Nameplate Data			230 V, 60 Hz: High Voltage Connection		
Rated Output (HP)	1		Full Load Torque	3 LB-FT	
Volts	115/230		Start Configuration	direct on line	
Full Load Amps	12.8/6.4		Breakdown Torque	6.9 LB-FT	
R.P.M.	1725		Pull-up Torque	5.9 LB-FT	
Hz	60 Phase	1	Locked-rotor Torque	10 LB-FT	
NEMA Design Code	L KVA Code	K	Starting Current	39 A	
Service Factor (S.F.)	1.15		No-load Current	4.1 A	
NEMA Nom. Eff.	68 Power Factor	74	Line-line Res. @ 25°C	2.6 Ω A Ph 1.8 Ω B Ph	
Rating - Duty	40C AMB-CONT		Temp. Rise @ Rated Load	79°C	
S.F. Amps			Temp. Rise @ S.F. Load	96°C	

Load Characteristics 230 V, 60 Hz, 1 HP

% of Rated Load	25	50	75	100	125	150	S.F.
Power Factor	39	53	67	75	81	84	79
Efficiency	52.9	67.6	70	70.3	68.6	64.9	69.3
Speed	1781	1765	1746	1726	1701	1666	1711
Line amperes	4.3	4.7	5.3	6.2	7.4	8.9	6.9

Gráfica de desempeño 230V, 60Hz, 1.0HP Desempeño típico - Sin valores garantizados



AC Induction Motor Performance Data

Record # 59549

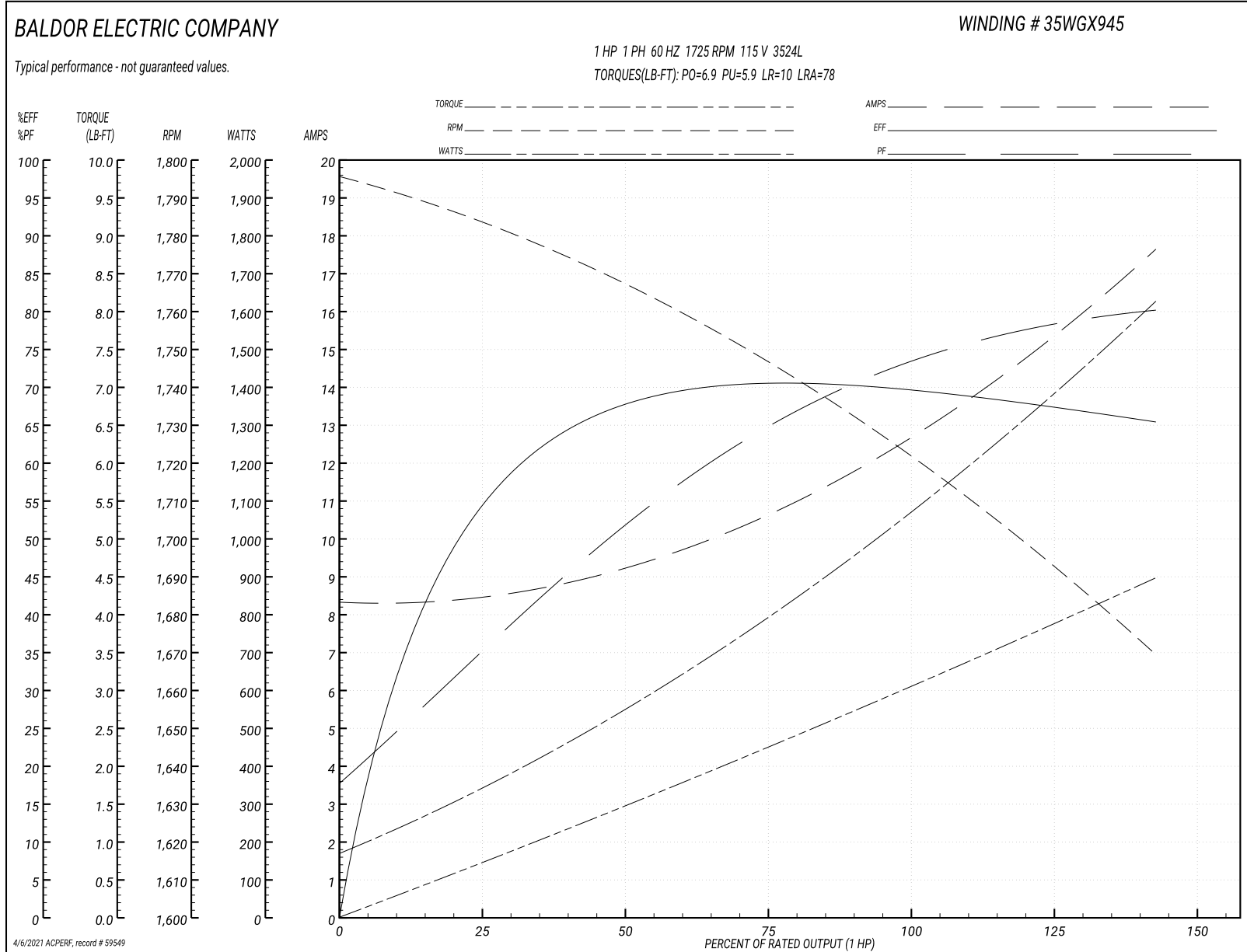
Typical performance - not guaranteed values

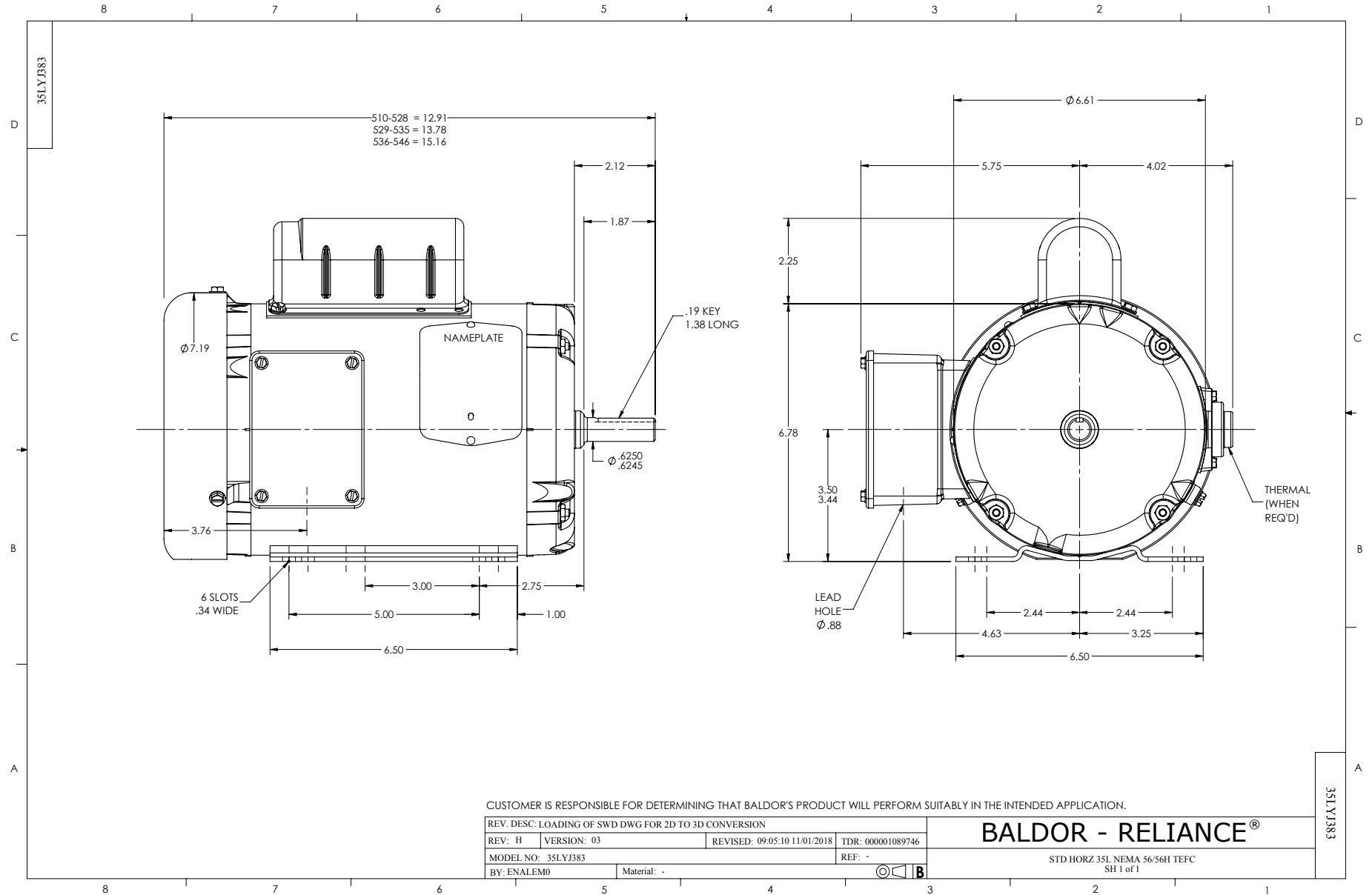
Winding: 35WGX945-R003		Type: 3524L	Enclosure: TEFC		
Nameplate Data			115 V, 60 Hz: Low Voltage Connection		
Rated Output (HP)		1	Full Load Torque	3 LB-FT	
Volts		115/230	Start Configuration	direct on line	
Full Load Amps		12.8/6.4	Breakdown Torque	6.9 LB-FT	
R.P.M.		1725	Pull-up Torque	5.9 LB-FT	
Hz	60 Phase	1	Locked-rotor Torque	10 LB-FT	
NEMA Design Code	L	KVA Code	K	Starting Current	78 A
Service Factor (S.F.)		1.15	No-load Current	8.2 A	
NEMA Nom. Eff.	68	Power Factor	74	Line-line Res. @ 25°C	0.65 Ω A Ph 1.8 Ω B Ph
Rating - Duty		40C AMB-CONT	Temp. Rise @ Rated Load	79°C	
S.F. Amps			Temp. Rise @ S.F. Load	96°C	

Load Characteristics 115 V, 60 Hz, 1 HP

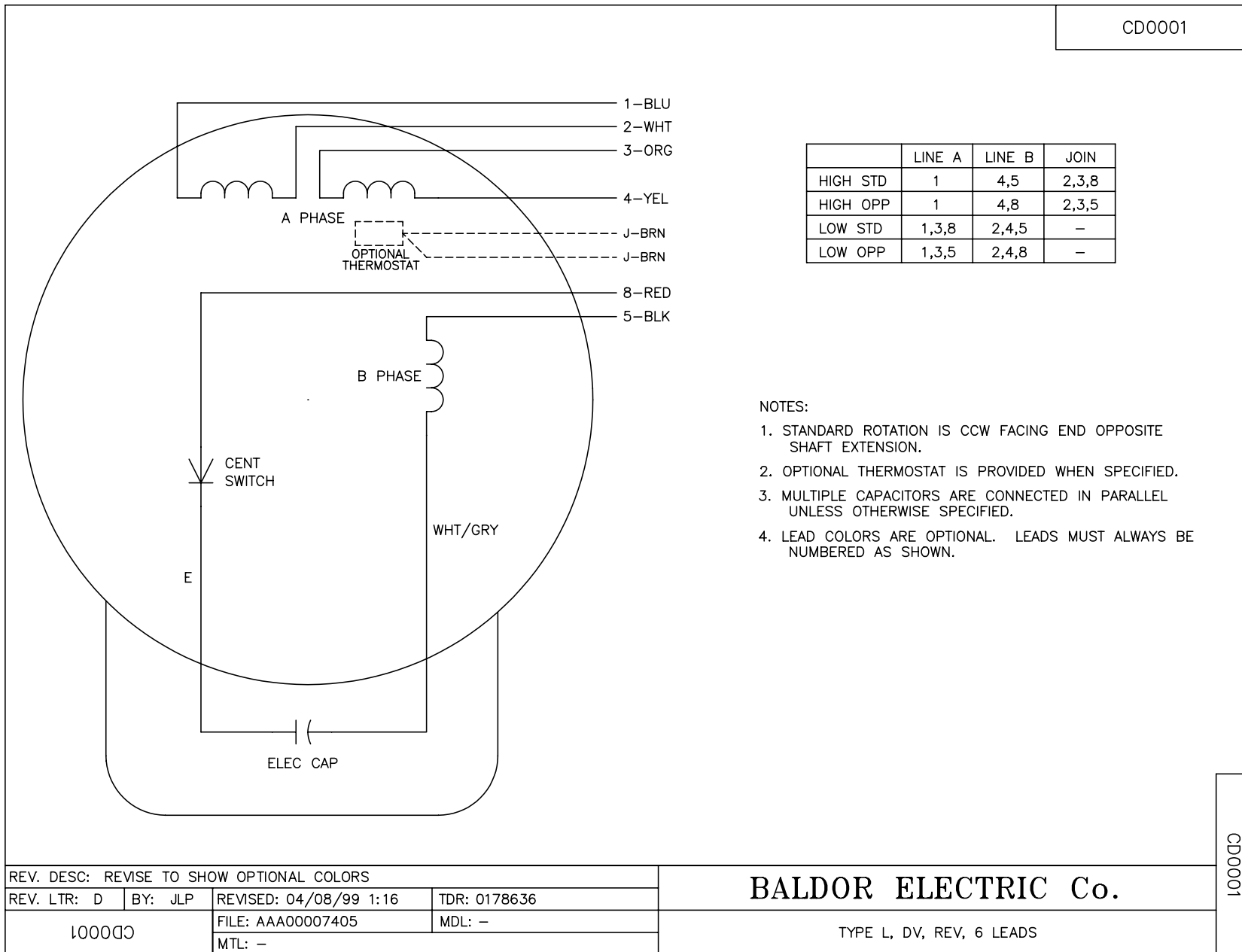
% of Rated Load	25	50	75	100	125	150	S.F.
Power Factor	39	53	67	75	81	84	79
Efficiency	52.9	67.6	70	70.3	68.6	64.9	69.3
Speed	1781	1765	1746	1726	1701	1666	1711
Line amperes	8.6	9.4	10.6	12.4	14.8	17.8	13.8

Gráfica de desempeño 115V, 60Hz, 1.0HP Desempeño típico - Sin valores garantizados





CD0001



REV. DESC: REVISE TO SHOW OPTIONAL COLORS			
REV. LTR: D	BY: JLP	REVISED: 04/08/99 1:16	TDR: 0178636
100000		FILE: AAA00007405	MDL: -
		MTL: -	

BALDOR ELECTRIC Co.

TYPE L, DV, REV, 6 LEADS

CD0001