

BALDOR® • RELIANCE 

Paquete de información de producto

M7054TX

15//10HP,1765//1470RPM,3PH,60//50HZ,254T

Detalle producto							
Revisión:	X	Estado:	PRD/A	Núm. cambio:		Propietario:	No
Tipo:	AC	Spec elec.:	09WGZ496	Diagrama Conexión:	CD0005	Planta fabr.:	
Spec Mec.:	09E270	Diseño:	09LYE270	Polos:	04	Fecha de creación:	03-07-2011
Base:	RG	Efec. Fecha:	10-27-2020	Cables:	9#12		

Specs			
Catalog Number:	M7054TX	Heater Indicator:	No Heater
Enclosure:	XPFC	Insulation Class:	B
Frame:	254T	Inverter Code:	Not Inverter
Frame Material:	Iron	IP Rating:	NONE
Output @ Frequency:	10.000 HP @ 50 HZ	KVA Code:	G
	15.000 HP @ 60 HZ	Lifting Lugs:	Standard Lifting Lugs
Synchronous Speed @ Frequency:	1800 RPM @ 60 HZ	Locked Bearing Indicator:	Locked Bearing
Voltage @ Frequency:	460.0 V @ 60 HZ	Motor Lead Quantity/Wire Size:	9 @ 12 AWG
	380.0 V @ 50 HZ	Motor Lead Exit:	Ko Box
	230.0 V @ 60 HZ	Motor Lead Termination:	Flying Leads
	190.0 V @ 50 HZ	Motor Type:	X0936M
XP Class and Group:	CLI GP D; CLII GP F,G	Mounting Arrangement:	F1
XP Division:	Division I	Power Factor:	85
Agency Approvals:	CSA	Product Family:	Hazardous Location Motor
	UL	Pulley End Bearing Type:	Ball
Auxillary Box:	No Auxillary Box	Pulley Face Code:	Standard
Auxillary Box Lead Termination:	None	Pulley Shaft Indicator:	None
Base Indicator:	Rigid	Rodent Screen:	None

Bearing Grease Type:	Polyrex EM (-20F +300F)	RoHS Status:	ROHS NON-COMPLIANT
Blower:	None	Shaft Extension Location:	Pulley End
Current @ Voltage:	36.000 A @ 230.0 V	Shaft Ground Indicator:	No Shaft Grounding
	30.000 A @ 190.0 V	Shaft Rotation:	Reversible
	18.000 A @ 460.0 V	Shaft Slinger Indicator:	No Slinger
	15.000 A @ 380.0 V	Speed Code:	Single Speed
Design Code:	B	Motor Standards:	NEMA
Drip Cover:	No Drip Cover	Starting Method:	Direct on line
Duty Rating:	CONT	Thermal Device - Bearing:	None
Electrically Isolated Bearing:	Not Electrically Isolated	Thermal Device - Winding:	Normally Closed Thermostat
Feedback Device:	NO FEEDBACK	Vibration Sensor Indicator:	No Vibration Sensor
Front Face Code:	Standard	Winding Thermal 1:	None
Front Shaft Indicator:	None	Winding Thermal 2:	None
		XP Temp Code:	T3C

Placa NP1426XPSLEV	
NO.	<input type="text"/>
SER.	<input type="text"/>
SPEC.	09E270Z496G1
CAT.NO.	M7054TX
HP	15//10
VOLTS	230/460//190/380
AMPS	36/18//30/15
RPM	1765//1470
HZ	60//50
SER.F.	1.00
RATING	40C AMB-CONT
FRAME	254T
USABLE AT 208V	<input type="checkbox"/>
BLANK	<input type="checkbox"/>

CC	<input type="text"/>
T. CODE	T3C
PH	3
CL	B
DES	B
CODE	G
NEMA-NOM-EFF	91
PF	85

Lista de partes		
Núm. parte	Descripción	Cantidad
SA218818	SA 09E270Z496G1	1.000 EA
RA205991	RA 09E270Z496G1	1.000 EA
09FN3001C01	EXTERNAL FAN, PLASTIC	1.000 EA
MJ5000A09	EFI KIT #1578 (400 ML CARTRIDGE OF EFI	0.031 EA
09CB1000A57	CONDUIT BOX, MACH	1.000 EA
10XN3118K16	5/16-18 X 1' GRADE #5, STL, ZINC PLATE	4.000 EA
HW1001A31	LOCKWASHER 5/16, ZINC PLT.591 OD, .319 I	4.000 EA
WD1000B25	GND LUG, BURNDY L125HP OR T&B L125HP-BB	1.000 EA
19XW3118G08	.31-18X.50,HEX WSHR HD,TAPTITE 2,GREEN	1.000 EA
HW1001A25	LOCKWASHER 1/4, ZINC PLT .493 OD, .255 I	1.000 EA
09EP1700A01	FR ENDPLATE, MACH	1.000 EA
10XN3816K28	3/8-16 X 1.75 HEX HD CAP SCREW, GRADE 5	4.000 EA
HW1001A38	LOCKWASHER 3/8, ZINC PLT .688 OD, .382 I	4.000 EA
HW5100A08	W3118-035 WVY WSHR (WB)	1.000 EA
HA2002A05	SPACER, #208 BRG	1.000 EA
10XN2520K36	1/4-20 X 2.25" HX HD SCRWGRADE 5, ZINC P	4.000 EA
09EP1707A01	PU ENDPLATE, MACH	1.000 EA
10XN3816K28	3/8-16 X 1.75 HEX HD CAP SCREW, GRADE 5	4.000 EA
HW1001A38	LOCKWASHER 3/8, ZINC PLT .688 OD, .382 I	4.000 EA
09FH1004A01	FAN COVER, MACH	1.000 EA
10XN2520K14	1/4-20 X .88 HEX GRD 5 (20001)	3.000 EA
HW1001A25	LOCKWASHER 1/4, ZINC PLT .493 OD, .255 I	3.000 EA
09CB1500A01SP	CONDUIT BOX LID, MACH	1.000 EA
10XN2520K16	1/4-20 X 1" HX HD SCRW GRADE 5, ZINC P	6.000 EA

Lista de partes (cont.)		
Núm. parte	Descripción	Cantidad
HW1001A25	LOCKWASHER 1/4, ZINC PLT .493 OD, .255 I	6.000 EA
HW2501G25	KEY, 3/8 SQ X 2.875	1.000 EA
LB1115N	LABEL,LIFTING DEVICE (ON ROLLS)	1.000 EA
LB1073	ALUM XP CAUTION LABEL	1.000 EA
MJ5001A27	32220KN GRAY SEALER *MIN BUY 4 QTS=1GAL	0.001 QT
HW4500A20	1/8NPT SL PIPE PLUG	2.000 EA
MJ1000A02	GREASE, POLYREX EM EXXON	0.080 LB
HW4500A20	1/8NPT SL PIPE PLUG	2.000 EA
HW2500A25	WOODRUFF KEY USA #1008 #BLOW CARBON STEE	1.000 EA
MG1025G05	WILKOFASST, 789.227, MED. GRAY CHAR. MET.	0.050 GA
85XU0407S04	4X1/4 U DRIVE PIN STAINLESS	6.000 EA
MN416A01	TAG-INSTAL-MAINT no wire (1200/bx) 1/21	1.000 EA
LD7020D09	LEAD SET, 12AWG, 9 LEAD, 20" LONG LEADS	1.000 EA
LB1119N	WARNING LABEL	1.000 EA
LC0145B01	CONNECTION LABEL	1.000 EA
NP1426XPSLEV	SS XP UL CSA-EEV CC CL-I GP-D	1.000 EA
40PA1005	PACKAGING GROUP, 09 STD	1.000 EA

AC Induction Motor Performance Data

Record # 50253

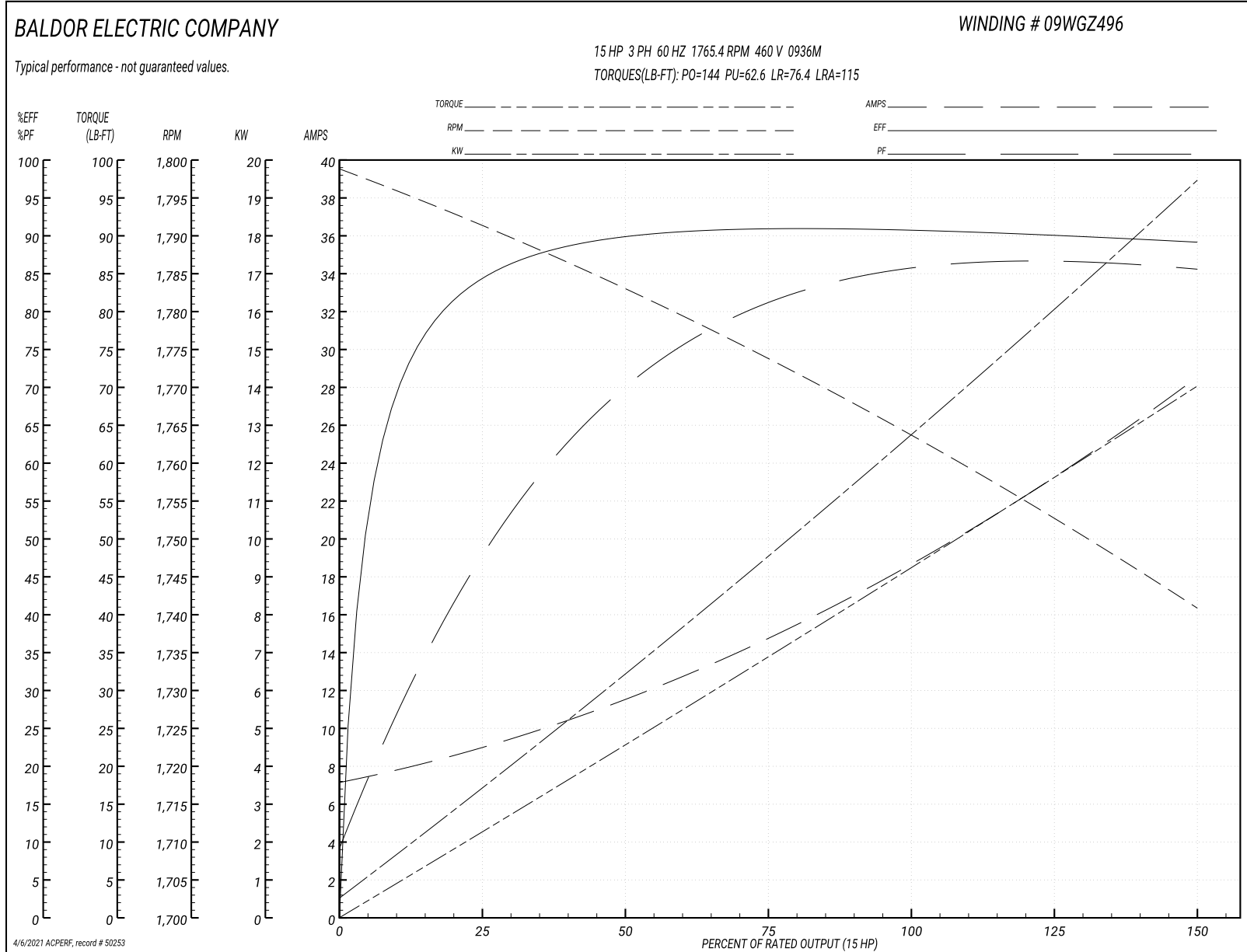
Typical performance - not guaranteed values

Winding: 09WGZ496-R001		Type: 0936M	Enclosure: XPFC	
Nameplate Data			460 V, 60 Hz: High Voltage Connection	
Rated Output (HP)	15//10	Full Load Torque	44.5 LB-FT	
Volts	230/460//190/380	Start Configuration	direct on line	
Full Load Amps	36/18//30/15	Breakdown Torque	144 LB-FT	
R.P.M.	1765//1470	Pull-up Torque	62.6 LB-FT	
Hz	60//50 Phase	Locked-rotor Torque	76.4 LB-FT	
NEMA Design Code	B KVA Code	Starting Current	115 A	
Service Factor (S.F.)		No-load Current	7.37 A	
NEMA Nom. Eff.	91 Power Factor	Line-line Res. @ 25°C	0.72308 Ω	
Rating - Duty	40C AMB-CONT	Temp. Rise @ Rated Load	45°C	

Load Characteristics 460 V, 60 Hz, 15 HP

% of Rated Load	25	50	75	100	125	150
Power Factor	48	70	79	85	87	86
Efficiency	83.4	89.5	90.9	91	90.4	89
Speed	1791.6	1783.6	1775	1765.4	1754.6	1740.8
Line amperes	8.53	11.2	14.5	18.2	22.4	28.5

Gráfica de desempeño 460V, 60Hz, 15.0HP Desempeño típico - Sin valores garantizados



AC Induction Motor Performance Data

Record # 50254

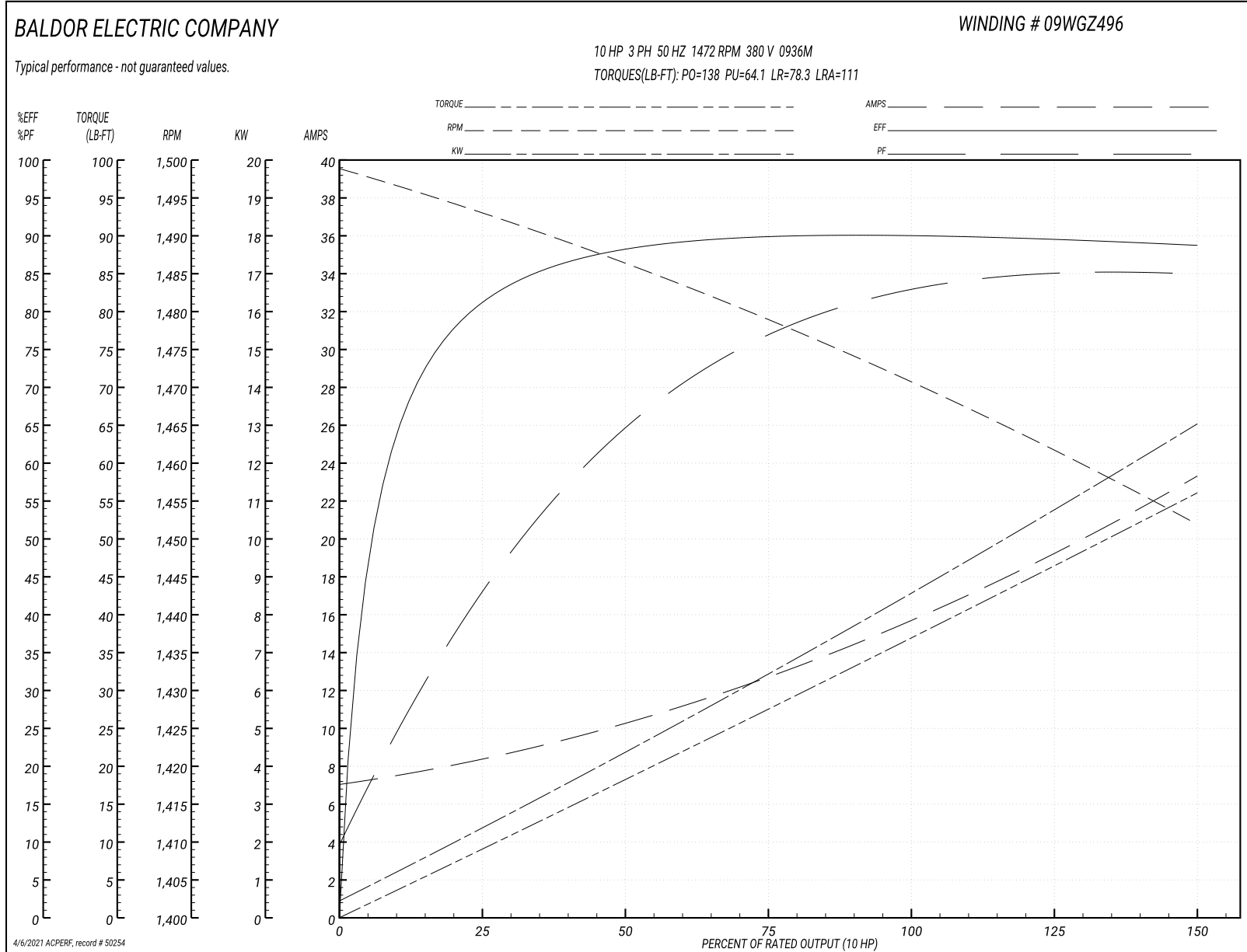
Typical performance - not guaranteed values

Winding: 09WGZ496-R001		Type: 0936M		Enclosure: XPFC	
Nameplate Data			380 V, 50 Hz: High Voltage Connection		
Rated Output (HP)	15//10	Full Load Torque	35.6 LB-FT		
Volts	230/460//190/380	Start Configuration	direct on line		
Full Load Amps	36/18//30/15	Breakdown Torque	138 LB-FT		
R.P.M.	1765//1470	Pull-up Torque	64.1 LB-FT		
Hz	60//50 Phase	3	Locked-rotor Torque	78.3 LB-FT	
NEMA Design Code	B KVA Code	G	Starting Current	111 A	
Service Factor (S.F.)		1	No-load Current	7.18 A	
NEMA Nom. Eff.	91 Power Factor	85	Line-line Res. @ 25°C	0.661 Ω	
Rating - Duty	40C AMB-CONT		Temp. Rise @ Rated Load	35°C	
			Locked-rotor Power Factor	38.7	
			Rotor inertia	1.57 LB-FT ²	

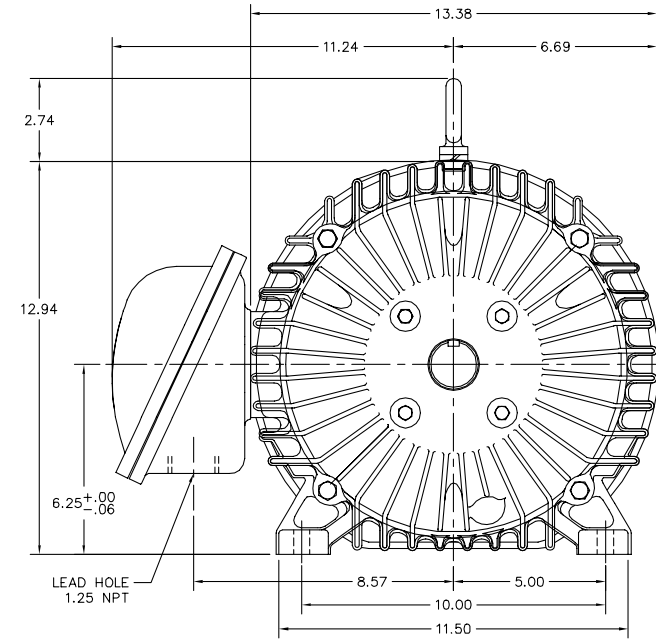
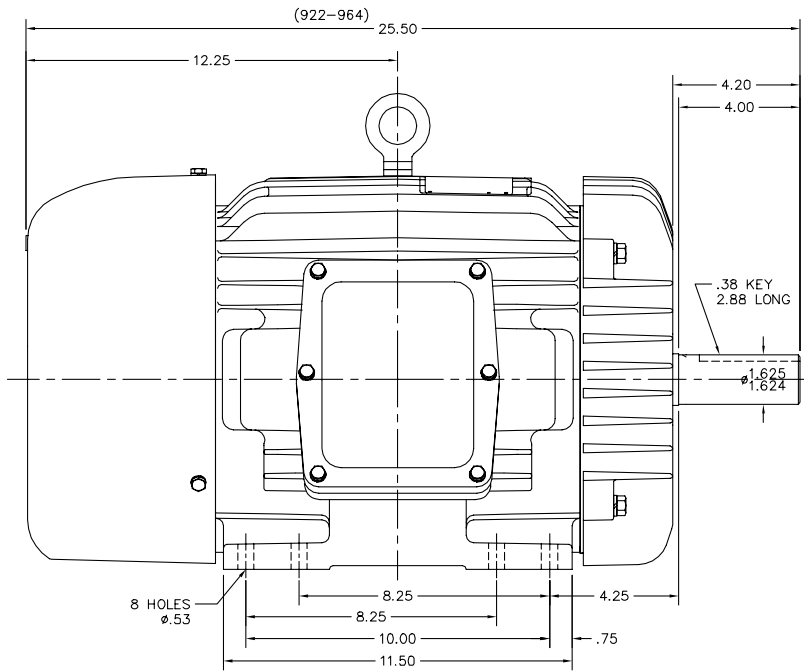
Load Characteristics 380 V, 50 Hz, 10 HP

% of Rated Load	25	50	75	100	125	150
Power Factor	43	64	75	82	85	85
Efficiency	80.3	88	89.6	90.2	89.9	88.7
Speed	1493	1487	1480	1472	1463	1452
Line amperes	8.07	10.1	12.5	15.3	18.6	23.3

Gráfica de desempeño 380V, 50Hz, 10.0HP Desempeño típico - Sin valores garantizados



09LYE270



09LYE270

CUSTOMER IS RESPONSIBLE FOR DETERMINING THAT BALDOR'S PRODUCT WILL PERFORM SUITABLY IN THE INTENDED APPLICATION.

REV. DESC: UPDATE TO ADD 964 STACK		
REV. LTR: H	VERSION: 05	TDR: 000001063842
FILE: \AAA\00000\626	REVISED: 08:52:15 03/14/2018	BY: USBRKNI1
MTL: -		

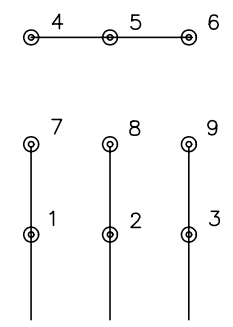
BALDOR

HORZ XPFC 254-6T CL.I GP.D,CL.II GP.F&G
SH 1 of 1

CD0005

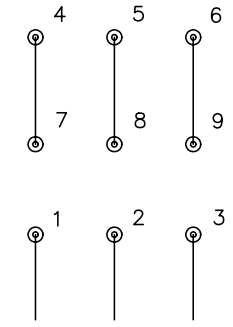


LOW VOLTAGE
(2Y)



LINE

HIGH VOLTAGE
(1Y)



LINE

NOTES:

1. INTERCHANGE ANY TWO LINE LEADS TO REVERSE ROTATION.
2. OPTIONAL THERMOSTATS ARE PROVIDED WHEN SPECIFIED.
3. ACTUAL NUMBER OF INTERNAL PARALLEL CIRCUITS MAY BE A MULTIPLE OF THOSE SHOWN ABOVE.
4. LEAD COLORS ARE OPTIONAL. LEADS MUST ALWAYS BE NUMBERED AS SHOWN.

REV. DESC: REVISE TO SHOW OPTIONAL COLORS			
REV. LTR: E	BY: JLP	REVISED: 01/19/99 10:15	TDR: 0171435
900000		FILE: AAA00005140	MDL: -
		MTL: -	

BALDOR ELECTRIC Co.

3PH, DV, 9 LEADS

CD0005