

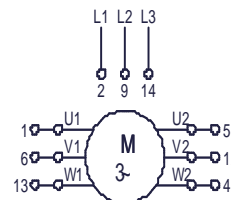
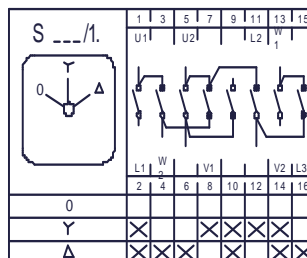
**Technical data sheet**

Description

**Article number:** MZ27250  
**Type description:** S 756/1.0600

Switch diagram

Star-Delta-Switch



Electrical Data series 756:  
 Rated uninterrupted current I<sub>th</sub> = 125 A  
 Rated operational current I<sub>e</sub> AC21 A = 125 A  
 Braking capacity AC23B(A) / 400 V = 45 kW  
 Braking capacity AC3 / 400 V = 45 kW  
 Isolating characteristic up to 500 V  
 Single – phase motor  
 1 x 230 V = 11 kW  
 1 x 400 V = 18,5 kW

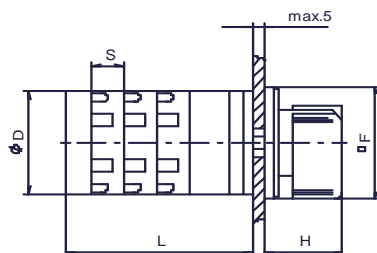
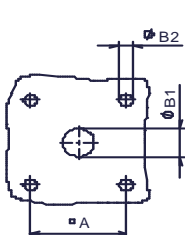
Application

Front mounting with 4-hole fixing  
 handle black  
 front plate silver  
 size 3  
 outside: 88x88 mm  
 mounting: 68X68 mm

Dimensions (mm)

L according to number of contacts

A	B1	B2	D	F	H	S	1/2	3/4	5/6	7/8
68	15	5,5	86	88	35	26,5	64	90,5	117	143,5



subject to change without notice errors and errata excepted