

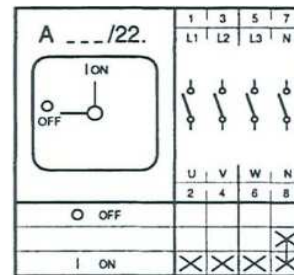
Technical data sheet

Description

Article number: MZ21008
Type description: A 451/22.0400

Switch diagram

ON-OFF Switch



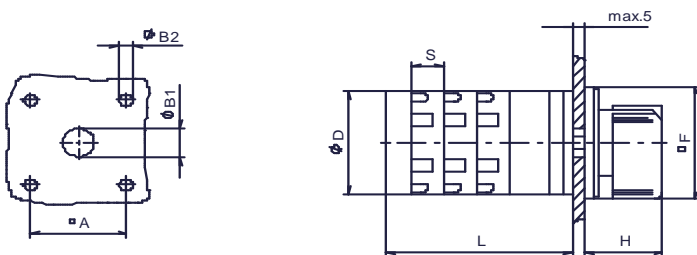
Electrical Data series 451:
 Rated uninterrupted current I_{th} = 63 A
 Rated operational current I_e AC21 A = 50 A
 Braking capacity AC23B(A) / 400 V = 22 kW
 Braking capacity AC3 / 400 V = 18,5 kW
 Isolating characteristic up to 500 V
 Single – phase motor
 1 x 230 V = 5,5 kW
 1 x 400 V = 7 kW

Application

Front mounting with 4-hole fixing
 handle black
 front plate silver
 size 2
 outside: 64x64 mm
 mounting: 48X48 mm

Dimensions (mm)

A	B1	B2	D	F	H	S	L according to number of contacts			
48	12	5,5	72	64	33	17,5	1/2	3/4	5/6	7/8
							54	71,5	89	106,5



subject to change without notice errors and errata excepted