

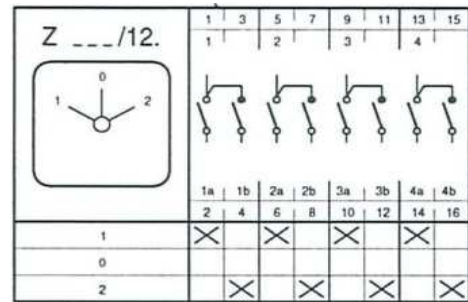
**Technical data sheet**

Description

**Article number:** MZ27123  
**Type description:** Z 756/12.0600

Switch diagram

Change Over Switch



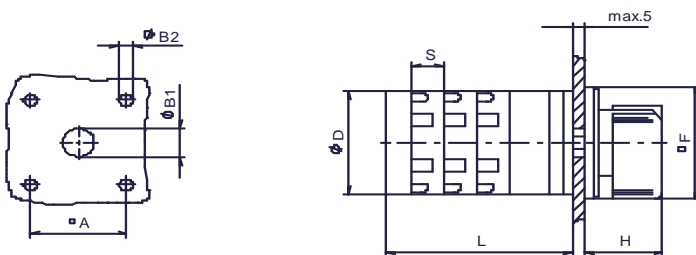
Electrical Data series 756:  
 Rated uninterrupted current I<sub>th</sub> = 125 A  
 Rated operational current I<sub>e</sub> AC21 A = 125 A  
 Braking capacity AC23B(A) / 400 V = 45 kW  
 Braking capacity AC3 / 400 V = 45 kW  
 Isolating characteristic up to 500 V  
 Single – phase motor  
 1 x 230 V = 11 kW  
 1 x 400 V = 18,5 kW

Application

Front mounting with 4-hole fixing  
 handle black  
 front plate silver  
 size 3  
 outside: 88x88 mm  
 mounting: 68X68 mm

Dimensions (mm)

|    |    |     |    |    |    |      |     |      |     |       |                                   |  |  |  |
|----|----|-----|----|----|----|------|-----|------|-----|-------|-----------------------------------|--|--|--|
|    |    |     |    |    |    |      |     |      |     |       | L according to number of contacts |  |  |  |
| A  | B1 | B2  | D  | F  | H  | S    | 1/2 | 3/4  | 5/6 | 7/8   |                                   |  |  |  |
| 68 | 15 | 5,5 | 86 | 88 | 35 | 26,5 | 64  | 90,5 | 117 | 143,5 |                                   |  |  |  |



subject to change without notice errors and errata excepted