

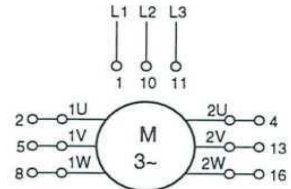
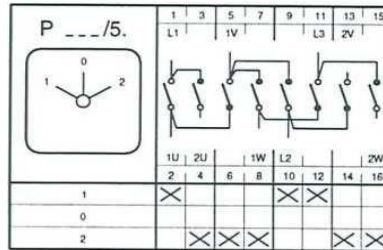
Technical data sheet

Description

Article number: MZ12212
Type description: P 105/9.0200

Switch diagram

Multi-Speed Switch



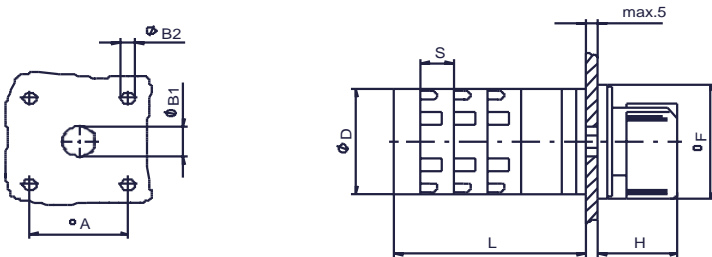
Electrical Data series 105:
 Rated uninterrupted current I_{th} = 20 A
 Rated operational current I_e AC21 A = 20 A
 Braking capacity AC23B(A) / 400 V = 7,5 kW
 Braking capacity AC3 / 400 V = 5,5 kW
 Isolating characteristic up to 500 V
 Single – phase motor
 1 x 230 V = 2,2 kW
 1 x 400 V = 3 kW

Application

Front mounting with 4-hole fixing
 handle black
 front plate silver
 size 1
 outside: 48x48 mm
 mounting: 36X36 mm

Dimensions (mm)

L according to number of contacts
 A B1 B2 D F H S 1/2 3/4 5/6 7/8
 36 12 4,5 44 48 29 12,5 34 46,5 59 71,5



subject to change without notice errors and errata excepted